

DEPARTMENT OF THE ARMY TECHNICAL MANUAL

**DIRECT SUPPORT AND GENERAL SUPPORT MAINTENANCE
REPAIR PARTS AND SPECIAL TOOLS LISTS (INCLUDING
DEPOT MAINTENANCE REPAIR PARTS AND SPECIAL TOOLS)
TEST SET, RADAR AN/GPM-46
FSN 6625-855-8938**

Headquarters, Department of the Army, Washington, D.C.
30 July 1973

Current as of January 1973

	Paragraph	Page
Section I. INTRODUCTION		
Scope	1-1	2
General.	1-2	2
Explanation of columns	1-3	2
Special information	1-4	3
Location of repair parts	1-5	4
Abbreviations (Not applicable)	1-6	4
Reporting of equipment publication improvements	1-7	4
II. REPAIR PARTS LIST		6
III. SPECIAL TOOLS, TEST AND SUPPORT EQUIPMENT (Not applicable)		
IV. INDEX-FEDERAL STOCK NUMBER AND REFERENCE NUMBER CROSS-REFERENCE TO FIGURE AND ITEM NUMBER		10

*This manual supersedes TM 11-6625-458-35P, 21 March 1962.

SECTION I

INTRODUCTION

1-1. Scope

This manual lists repair parts and special tools required for the performance of direct support, general support, and depot maintenance of the AN/GPM-46. The PCCN for the AN/GFM-46 is GRSAAS for ail models.

1-2. General

This repair parts and special tools list is divided into the following sections:

a. Repair Parts List-Section II. A list of repair parts authorized for the performance of maintenance at the direct support, general support, and depot level. This repair parts list is arranged in alphabetical order.

b. Special Tool Test and Support Equipment - Section III. Not applicable.

c. Index - Federal Stock Number and Reference Number Cross-Reference to Figure and Item Number - Section IV. A list, in ascending numerical sequence, of all Federal stock numbers appearing in the listings, followed by a list, in alphameric sequence, of all reference numbers appearing in the listings. Federal stock number and reference numbers are cross-referenced to each illustration figure and item number or reference designation appearance.

1-3. Explanation of Columns

The following provides an explanation of columns found in the tabular list.

a. Source, Maintenance, and Recoverability Codes (SMR).

(1) *Source* code. Indicates the source for the listed items. Source codes are-

Code	Explanation
P -	Repair parts, special tools and test equipment supplied from the GSA/DSA or Army supply system and authorized for use at indicated maintenance categories.
P 2 -	Repair parts, special tools and test equipment which are procured and stocked for insurance purposes because the combat or military essentiality of the end item dictates that a minimum quantity be available in the supply system.
P 9 -	Assigned to items which are NSA design controlled: unique repair parts, special tools, test, measuring, and diagnostic equipment which are stocked and supplied by the Army COMSEC Logistic System and which are not subject to the provisions of AR 380-41.

Code	Explanation
P 10 -	Assigned to items which are NSA design controlled: special tools, test, measuring , and diagnostic equipment for COMSEC support which art, accountable under the provisions of AR 380-41 and which are stocked and supplied by the Army COMSEC Logistic System.
M -	Repair parts, special tools and test equipment which are not procured or stocked as such in the supply system but are to be manufactured at indicated maintenance levels.
A -	Assemblies which are not procured or stocked as such but are made up of two or more units. Such component units carry individual stock numbers and descriptions, are procured and stocked separately, and can be assembled to form the required assembly at indicated maintenance categories.
X -	Parts and assemblies that are not procured or stocked because the failure rate is normally below that of the applicable end item or component. The failure of such part or assembly should result in retirement of the end item from the supply system.
X1 -	Repair parts which are not procured or stocked. The requirement for such items will be filled by the next higher assembly or component.
X2 -	Repair parts, special tools and test equipment which are not stocked and have no foreseen mortality. The indicated maintenance category requiring such repair parts will attempt to obtain the parts through cannibalization or salvage. The item may be requisitioned, with exception data, from the end item manager for immediate use.
G	Major assemblies that are procured with PEMA funds for initial issue only as exchange assemblies at DS and GS level. These assemblies will not be stocked above DS and GS level or returned to depot supply level.

NOTE

Cannibalization or salvage may be used as a source of supply for any items source coded above except those coded X1 and aircraft support items as restricted by . AR 700-42.

(2) **Maintenance code.** Indicates the lowest category of maintenance authorized to instill the listed item. Capabilities of higher maintenance categories are considered equal or better. Maintenance codes are —

Code	Explanation
c	Crew/operator
O	Organizational maintenance
F	Direct support maintenance
H	General support maintenance
D	Depot maintenance

(3) **Recoverability code.** Indicates whether un-serviceable items should be returned for recovery or salvage. Items not coded are nonrecoverable. Recoverability codes are—

Code	Explanation
R -	Repair parts (assemblies and components!, special tools and test equipment which are considered economically repairable at direct and general support maintenance levels. When the item is no longer economically repairable, it is normally disposed of at the GS level. When supply considerations dictate, some of these repair parts may be listed for automatic return to supply for depot level repair as set forth in AR 710-1. When so listed, they will be replaced by supply on an exchange basis.
S -	Repair parts, special tools and test equipment, and assemblies which are economically repairable at DS and GS activities and which normally are furnished by supply on an exchange basis. When items are determined by a GSU to be uneconomically repairable, they will be evacuated to a depot for evaluation and analysis before final disposition.
T -	High dollar value recoverable repair parts, special tools and test equipment which are subject to special handling and are issued on an exchange basis. Such items will be repaired or overhauled at depot maintenance activities only. No repair may be accomplished at lower levels.
U -	Repair parts, special tools and test equipment specifically selected for salvage by reclamation units because of precious metal content, critical materials, high dollar value, or reusable casings or castings.

b. Federal Stock Number. Indicates the Federal stock number assigned to the item and will be used for requisitioning purposes.

c. Description. Indicates the Federal item name

and a minimum description required to identify the item. The last line indicates the reference number followed by the applicable Federal Supply Code for Manufacturer (FSCM) in parentheses. The FSCM is used as an element in item identification to designate manufacturer or distributor or Government agency, etc., and is identified in SB 708-42.

d. Unit of Measure (U/M). Indicates the standard or basic quantity, by which the listed item is used, in performing the actual maintenance function. This measure is expressed by a two-character alphabetical abbreviation; e.g., ea. in, pr, etc., and is the basis used to indicate quantities and allowances in subsequent columns. When the unit of measure differs from the unit of issue, the lowest unit of issue that will satisfy the required units of measure will be requisitioned.

e. Quantity Incorporated in Unit. This column indicates the quantity of the item used in the equipment. Subsequent appearances of the same item in the same assembly are indicated by the letters "REF".

f. 30+-Day DS/GS Maintenance Allowances.

NOTE

Allowances in GS column are for GS maintenance on only.

(1) The repair parts indicated by asterisk entries in separate allowance columns for DS and GS represent those authorized for use at that category of maintenance to be requisitioned on an "as required" basis, until stockage is based on demand in accordance with AR 710-2.

(2) Allowance quantities are indicated in the special tool lists section for special tools, TMDE, and other support equipment.

g. 1-Year Allowance Per 100 Equipments/Contingency Planning Purposes. Column intentionally left blank.

h. Depot Maintenance Allowance Per 100 Equipments. This column indicates opposite the first appearance of each item the total quantity authorized for depot maintenance of 100 equipments.

i. Illustration. This column is divided as follows:

(1) **Figure number.** Indicates the figure number of the illustration on which the item is shown in TM 11-6625-458-34.

(2) **Item number.** Indicates the item number or reference designation used to reference the item in the illustration.

1-4. Special Information

a. Usable on codes are included in column 3. Uncoded items are applicable to all models. Identification of the usable on codes used in this publication are—

Code	Used on
ALL	AN/GPM-46

b. The following publications pertain to the AN/GPM-46 and its components:

TM 11-6625-458-12	Operator and Organizational Maintenance Manual: Test Set, Radar AN/GPM-46
TM 11-6625-458-20P	Organizational Maintenance Repair Parts and Special Tools Lists: Test Set, Radar AN/ GPM-46
TM 11-6625-458-34	Field Maintenance Manual: Test Set, Radar AN/GPM-46

1-5. Location of Repair Parts

a. This manual contains one cross-reference index (sec IV) to be used to locate a repair part when either the Federal stock number or reference number (manufacturer's part number) is known. The first column in the index is prepared in numerical or alphanumeric sequence in ascending order. The reference numbers (manufacturer's part numbers) are listed immediately following the last listed Federal stock number in the index of Federal stock numbers.

b. When the Federal stock number or reference number is known, follow the procedures given in (1) and (2) below.

(1) Refer to the index of Federal stock numbers (sec IV) and locate the Federal stock number or

reference number. The FSN and reference number are cross-referenced to the applicable figure and item number or reference designation.

(2) Refer to the repair parts list (sec II) and locate the figure number (col 10a) and item number or reference designation (col 10b) as noted in the FSN index.

c. When the figure and item number or reference designation are known, scrutinize columns 10a and 10b of the repair parts list (sec II) until the item is located.

d. When the FSN, reference number, figure number, item number and reference designation are not known, scrutinize column 3 of the repair parts list (sec II), which is arranged in alphabetical order.

1-6. Abbreviations

Not applicable.

1-7. Reporting of Equipment Publication

Improvements

The reporting of errors, omissions, and recommendations for improving this publication by the individual user is encouraged. Reports should be submitted on DA Form 2028 (Recommended Changes to Publications) and forwarded direct to Commander, US Army Electronics Command, ATTN: AMSEL-MASS, Fort Monmouth, N.J., 07703.

(Next page is 6.)

SMR CODE	FEDERAL STOCK NUMBER	DESCRIPTION REFERENCE NUMBER & MFR. CODE USABLE ON CODE	UNIT OF MEAS	QTY INC IN UNIT	30-DAY DS MAINT ALLOWANCE			30-DAY CS MAINT ALLOWANCE			1-YR ALW PER 100 EQUIP CNTGCT	DEPOT MAINT ALW PER 100 EQUIP	ILLUSTRATION	
					(a)	(b)	(c)	(a)	(b)	(c)			(a)	(b)
					1-20	21-50	51-100	1-20	21-50	51-100			FIGURE NO.	ITEM NO.
P H	5910-144-1556	CAPACITOR, FIXED, ELECTROLYTIC MF P75% M15% 30VDCW 223-11616-109 (94990)	C6 4.5.	EA	1				*	*	*	3	13	C6
P H	5910-666-6298	CAPACITOR, FIXED, PAPER DIELECTRIC 1000 MMF PORM 10% 600VDCW CP09A1KF102K (81349)	C2..	EA	2				*	*	*	3	13	C2
P H	5910-666-6298	CAPACITOR, FIXED, PAPER DIELECTRIC 1000 MMF PORM 10% 600 VDEW CP09A1KF102K (81349)	C3..	EA	REF				*	*	*		13	C3
P H	5910-644-3596	CAPACITOR FIXED, PAPER DIELECTRIC 3300 MMF PORM 10% 400VDCW CP09A1KE332K (81349)	C4...	EA	2				*	*	*	3	13	C4
P H	5910-644-3596	CAPACITOR FIXED, PAPER DIELECTRIC 3300 MMF PORM 10% 400VDCW CP09A1KE332K (81349)	C5...	EA	REF				*	*	*		13	C5
P H	5910-665-0343	CAPACITOR FIXED, PAPER DIELECTRIC 10,000 MMF PORM 10% 100 VDCW CP09A1KB103K (81349)	C1...	EA	1				*	*	*	3	13	C1
P H	5935-950-112-f	CONNECTOR, RECEPTACLE, ELECTRICAL CONT STGHT SHAPE MALE DM9601-37PC (17419)	J1 37.	EA	1				*	*	*	3	10	J1
P H	5935-817-5180	CONNECTOR, RECEPTACLE, ELECTRICAL CONT STGHT SHAPE FEMALE DM9601-37SC (17419)	J2 37.	EA	1				*	*	*	3	10	J2
P H	5935-979-5221	CONNECTOR PLUG, ELECTRICAL STGHT SHAPE MALE DM9700004-37PC (17419)	P2 37 CONT .	EA	1				*	*	*	3		P2
P H	5935-878-9103	CONNECTOR, PLUG ELECTRICAL STGHT SHAPE FEMALE DM970037004C (17419)	P1 37 CONT .	EA	1				*	*	*	3		P1
P H	5330-862-2724	GASKET NO-REF-DESIG..... 232-36946 (94990)		EA	1				*	*	*	5		
P O	5355-850-2399	KNOB NO-REF-DESIG..... 36-15061A02 (94990)		EA	1	*	*	*	*	*	*	3		
P O	6240-155-7836	LAMP, INCANDESCENT DS1 0.04 AMP..... MS25237-327 (96906)		EA	5	*	*	*	*	*	*	50	10	DS1
P O	6240-155-7836	LAMP, INCANDESCENT DS2 0.04 AMP..... MS25237-327 (96906)		EA	REF	*	*	*	*	*	*		10	DS2
P O	6240-155-7836	LAMP, INCANDESCENT DS3 0.04 AMP..... MS25237-327 (96906)		EA	REF	*	*	*	*	*	*		10	DS3
P O	6240-155-7836	LAMP, INCANDESCENT DS4 0.04 AMP..... MS25237-327 (96906)		EA	REF	*	*	*	*	*	*		10	DS4
P O	6240-155-7836	LAMP, INCANDESCENT DS5 0.04 AMP..... MS25237-327 (96906)		EA	REF	*	*	*	*	*	*		10	DS5
P H	6210-351-6306	LIGHT, INDICATOR XDS1 W/RED LENS 265-36930 (94990)		EA	5				*	*	*	5		XDS1
P H	6210-851-6306	LIGHT, INDICATOR XDS2 W/RFD LENS 265-36930 (94990)		EA	REF				*	*	*			XDS2
P H	6210-851-6306	LIGHT, INDICATOR XDS3 W/RED LENS 265-36930 (94990)		EA	REF				*	*	*			XDS3
P H	6210-851-6306	LIGHT, INDICATOR XDS4 W/RED LENS 265-36930 (94990)		EA	REF				*	*	*			XDS4

SECTION I

TM11-6625-458-34P

(1) SMR CODE	(2) FEDERAL STOCK NUMBER	(3) DESCRIPTION REFERENCE NUMBER & MFR. CODE USABLE ON CODE		(4) UNIT OF MEAS	(5) QTY INC IN UNIT	(6) 30-DAY DS MAINT ALLOWANCE			(7) 30-DAY GS MAINT ALLOWANCE			(8) 1-1 R ALW PER 100 EQUIP CNTGCT	(9) DEPCT MAINT ALW PER 100 EQUIP	(10) ILLUSTRATION		
						(a)	(b)	(c)	(a)	(b)	(c)			(a)	(b)	
						1-20	21-50	51-100	1-20	21-50	51-100			FIGURE NO.	ITEM NO.	
P H	6210-851-6306	LIGHT, INDICATOR	XDS5 W/RED LENS	EA	REF				*	*	*					XDS5
P H	6210-851-6306	LIGHT, INDICATOR	NO-REF-DESIG W/RED LENS. 265-36930 (94990)	EA	REF				*	*	*					
P H	6210-851-6306	LIGHT, INDICATOR	NO-REF-DESIG W/RED LENS. 265-36930 (94990)	EA	REF				*	*	*					
P H	6210-851-6306	LIGHT, INDICATOR	NO-REF-DESIG W/RED LENS. 265-36930 (94990)	EA	REF				*	*	*					
P H	6210-851-6306	LIGHT, INDICATOR	NO-REF-DESIG W/RED LENS. 265-36930 (94990)	EA	REF				*	*	*					
P H	6625-863-3408	METER, ARBITRARY SCALE	NO-REF-DESIG..... PANEL TYPE 272-36489-1 (94990)	EA	1				*	*	*		3			
P H	6625-850-0083	METER, ARBITRARY SCALE	NO-REF-DESIG..... PANEL TYPE 272-36489-2 (94990)	EA	1				*	*	*		3			
P H	5340-862-2769	MOUNT, RESILIENT	NO-REF-DESIG RUBBER.... 275-36931 (94990)	EA	1				*	*	*		3			
P H	5945-850-0081	RELAY, ARMATURE	K1 2R VDCW..... 280-33457-1 (94990)	EA	5				*	*	*		3	10		K1
P H	5945-850-0081	RELAY, ARMATURE	K2 2R VDCW..... 280-33457-1 (94990)	EA	REF				*	*	*			10		K2
P H	5945-850-0081	RELAY, ARMATURE	K3 2R VDCW..... 280-33457-1 (94990)	EA	REF				*	*	*			10		K3
P H	5945-850-0081	RELAY, ARMATURE	K4 2R VDCW..... 280-33457-1 (94990)	EA	REF				*	*	*			10		K4
P H	5945-850-0081	RELAY, ARMATURE	K5..... 280-33457-1 (94990)	EA	REF				*	*	*		*	10		K5
P H	5905-727-8001	RESISTOR, FIXED, COMPOSITION	R12 680 OHM. FORM 5R 1/4 W RC07GF681J (81349)	EA	1				*	*	*		3	13		R12
P H	5905-688-3738	RESISTOR, FIXED, COMPOSITION	R15 1800.... OHM FORM 5R 1/4 W RC07GF182J (81349)	EA	3				*	*	*		3	13		R15
P H	5905-688-3738	RESISTOR, FIXED, COMPOSITION	R20 1800.... OHM FORM 5R 1/4 W RC07GF182J (81349)	EA	REF				*	*	*			13		R20
P H	5905-688-3738	RESISTOR, FIXED, COMPOSITION	R24 1800.... OHM FORM 5R 1/4 W RC07GF182J (81349)	EA	REF				*	*	*			13		R24
P H	5905-683-2230	RESISTOR, FIXED, COMPOSITION	R11 10,000.. OHM FORM 5R 1/4 W RC07GF103J (81349)	EA	2				*	*	*		3	13		R11
P H	5905-683-2238	RESISTOR, FIXED, COMPOSITION	R13 10,000.. OHM FORM 5R 1/4 W RC07GF103J (81349)	EA	REF				*	*	*			13		R13
P H	5905-726-4413	RESISTOR, FIXED, COMPOSITION	R16 12,000.. OHM FORM 5R 1/4 W RC07GF123J (81349)	EA	2				*	*	*		3	13		R16
P H	5905-726-4413	RESISTOR, FIXED, COMPOSITION	R19 12,000.. OHM FORM 5R 1/4 W RC07GF123J (81349)	EA	REF				*	*	*			13		R19

SECTION II

TM11-6625-458-34P

(1) SMR CODE	(2) FEDERAL STOCK NUMBER	(3) DESCRIPTION REFERENCE NUMBER & MFR. CODE USABLE ON CODE		(4) UNIT OF MEAS	(5) QTY INC IN UNIT	(6) 30-DAY DS MAINT ALLOWANCE			(7) 30-DAY GS MAINT ALLOWANCE			(8) 1-YR ALW PER 100 EQUIP CNTGCT	(9) DEPOT MAINT ALW PER 100 EQUIP	(10) ILLUSTRATION	
						(a)	(b)	(c)	(a)	(b)	(c)			(a)	(b)
						1-20	21-50	51-100	1-20	21-50	51-100			FIGURE NO.	ITEM NO.
P H		ESISTOR, FIXED, COMPOSITION HM PORM 5% 1/4 W C07GF153J (81349)	R22 15,000..	EA	2				*	*	*		3	13	R22
P H	5905-681-8818	ESISTOR, FIXED, COMPOSITION HM PORM 5% 1/4 W C07GF153J (81349)	R23 15,000..	EA	REF				*	*	*			13	R23
P H	5905-687-0000	ESISTOR, FIXED, COMPOSITION HM PORM 5% 1/4 W C07GF183J (81349)	R17 18,000..	EA	2				*	*	*		3	13	R17
P H	5905-687-0000	ESISTOR, FIXED, COMPOSITION HM PORM 5% 1/4 W C07GF183J (81349)	R18 18,000..	EA	REF				*	*	*			13	R18
P H	5905-687-0002	ESISTOR, FIXED, COMPOSITION HM PORM 5% 1/4 W C07GF183J (81349)	R25 22,000..	EA	1				*	*	*		3	13	R25
P H	5905-683-2246	ESISTOR, FIXED, COMPOSITION HM PORM 5% 1/4 W C07GF223J (81349)	R3 47,000..	EA	1				*	*	*		3	13	R3
P H	5905-686-3128	ESISTOR, FIXED, COMPOSITION OHM PORM 5% 1/4 W C07GF473J (81349)	R14 100,000.	EA	2				*	*	*		3	13	R14
P H	5905-686-3129	ESISTOR, FIXED, COMPOSITION OHM PORM 5% 1/4 W C07GF104J (81349)	R21 100,000.	EA	REF				*	*	*			13	R21
P H	5905-681-8856	ESISTOR, FIXED, COMPOSITION HM PORM 5% 1/4 W C07GF104J (81349)	R2 51,000..	EA	1				*	*	*		3	13	R2
P H	5905-849-9488	ESISTOR, FIXED, FILM CRMI% N65B3740F (81349)	R7 374 OHM.....	EA	1				*	*	*		3	13	R7
P H	5905-542-7713	ESISTOR, FIXED, FILM % N65B9070F (81349)	R1 900 OHM PORM..	EA	1				*	*	*		3	13	R1
P H	5905-688-3509	ESISTOR, FIXED, FILM % 1/4 W N65B1371F (81349)	R9 1370 OHM PORM..	EA	1				*	*	*		3	13	R9
P H	5905-583-6885	ESISTOR, FIXED, FILM % 1/4 W N65B2611F (81349)	R8 2610 OHM PORM..	EA	1				*	*	*		3	13	R8
P H	5905-577-6443	ESISTOR, FIXED, FILM CRMI% 2 W N80B8251F (81349)	R10 8250 OHM.....	EA	1				*	*	*		3	13	R10
P H	5905-841-4947	ESISTOR, FIXED, FILM % 2 W N80B1782F (81349)	R6 17800 OHM PORM.	EA	1				*	*	*		3	13	R6
P H	5905-849-7070	ESISTOR, FIXED, WIREWOUND PORM 1% 10 W 217-29352-2 (94990)	R5 36600 OHM.	EA	1				*	*	*		3	13	R5
P H	5935-577-0437	ESISTOR, VARIABLE 10% 1/2 W V6LAYS104A (81349)	R4 100,000 OHM PORM.	EA	1				*	*	*		3	10	R4
P H	5961-975-2175	SEMICONDUCTOR DEVICE, DIODE IN458 (81349)	CR1.....	EA	4				*	*	*		3	13	CR1

(1) SMR CODE	(2) FEDERAL	(3) DESCRIPTION REFERENCE NUMBER & MFR. CODE USABLE ON CODE		(4) UNIT OF MEAS	(5) QTY INC IN UNIT	(6) 30-DAY DS MAINT ALLOWANCE			(7) 30-DAY GS MAINT ALLOWANCE			(8) 1-YR ALW PER 100 EQUIP CNTGCV	(9) DEPOT MAINT ALW PER 100 EQUIP	(10) ILLUSTRATION	
						(a)	(b)	(c)	(a)	(b)	(c)			(a)	(b)
						1-20	21-50	51-100	1-20	21-50	51-100			FIGURE NO.	ITEM NO.
P H	5961-975-2175	SEMICONDUCTOR DEVICE, DIODE 1N458 (81349)	CR2.....	EA	REF				*	*	*			13	CR2
P H	5961-975-2175	SEMICONDUCTOR DEVICE, DIODE 1N458 (81349)	CR4.....	EA	REF				*	*	*			13	CR4
P H	5961-975-2175	SEMICONDUCTOR DEVICE, DIODE 1N458 (81349)	CR5.....	EA	REF				*	*	*			13	CR5
P H	5961-892-0963	SEMICONDUCTOR DEVICE, DIODE 1N473A (80131)	CR3.....	EA	1				*	*	*	3		13	CR3
P H	5961-843-4577	SEMICONDUCTOR DEVICE, DIODE 1N663 (81349)	CR6.....	EA	2				*	*	*	3		13	CR6
P H	5961-843-4577	SEMICONDUCTOR DEVICE, DIODE 1N663 (81349)	CR9.....	EA	REF				*	*	*			13	CR9
P H	5930-501-1755	SWITCH, PUSH S3 SPDT..... MS25089-3F (26036)		EA	1				*	*	*	5		10	S3
P H	5930-863-3441	SWITCH, ROTARY S2 SECTIONS, 19 POS, ... NON-PILE UP TYPE 240-36912 (94990)		EA	1				*	*	*	5		10	S2
P H	5930-854-3138	SWITCH, ROTARY S1 2 SECTIONS, 9 POS ... NON-PILE UP TYPE 240-36913 (94990)		EA	1				*	*	*	5		10	S1
P H	5961-754-8704	TRANSISTOR Q1..... 2N337 (81349)		EA	5				*	*	*	3		13	Q1
P H	5961-754-8704	TRANSISTOR Q2..... 2N337 (81349)		EA	REF				*	*	*			13	Q2
P H	5961-754-8704	TRANSISTOR Q3..... 2N337 (81349)		EA	REF				*	*	*			13	Q3
P H	5961-754-8704	TRANSISTOR Q4..... 2N337 (81349)		EA	REF				*	*	*			13	Q4
P H	5961-754-8704	TRANSISTOR Q5..... 2N337 (81349)		EA	REF				*	*	*			13	Q5

INDEX - FEDERAL STOCK NUMBER AND REFERENCE NUMBER
 CROSS-REFERENCE TO F FIGURE AND ITEM NUMBER

STOCK NUMBER	FIGURE NO*	ITEM NO.	STOCK NUMBER	FIGURE NO.	ITEM NO.
5330-862-2724			5930-863-3441	10	52
5340-862-2769			5935-817-5180	10	J2
5355-850-2399			5935-853-1127	10	J1
5905-542-7713	13	R1	5935-978-5221		P2
5905-577-0437	10	R4	5935-878-9103		P1
5905-577-6443	13	R10	5945-850-0081	10	K1
5935-583-6885	13	R8	5945-850-0081	10	K2
5905-681-8818	13	R22	5945-850-0081	10	K3
5905-681-8818	13	R23	5945-850-0081	10	KS
5905-681-8856	13	R2	5945-850-0081	10	KS
5905-683-2238	13	R11	5961-754-8704	17	
5905-683-2238	13	R13	5961-754-8704	13	Q1
5905-683-2246	13	P3	5961-754-8704	13	03
5905-686-3129	13	R14	5561-754-8704	13	94
5905-686-3129		R21	5961-754-8704	13	05
5905-687-0000	13	R17	5961-843-4577	13	CR6
5905-687-0000	13	R18	5961-843-4577	13	CR9
5905-687-0002	13	R25	5961-892-0963	13	CR3
5905-689-3509	13	R9	5961-975-2175	13	CR1
5905-688-3738	17	R15	5961-975-2175	13	CR2
5905-688-3738		220	5961-975-2175	13	CR4
5905-688-3738	13	R24	5961-975-2175	13	CR5
5905-726-4413	13	R16	6210-851-6306		
5905-726-4413	13	R19	6210-851-6306		XDS1
5905-727-8001	13	R12	6210-851-6306		XDS2
5905-841-4947	13	R6	6210-851-6306		XDS3
5905-849-7070	13	85	6210-851-6306		XDS4
5905-849-9489	13	Rf	6210-851-6365		XC55
5910-144-1556	13	Ch	6240-155-7836	10	DS1
5910-644-3596	13	c4	6240-155-7834	10	OS2
5910-644-3596	13	c5	6240-155-7836	10	OS3
5910-665-0343	13	Cl	6240-155-7836	10	DS4
5910-665-6298	13	c2	6240-155-7836	10	DSS
<i>5910-666-6298</i>	13	c3	6625-850-0083		
5930-501-1755	10		6625-863-3408		
5930-854-3139	10	S1			

REFERENCE NO.	MFR CODE	FIG. NO.	ITEM NO.	REFERENCE NO.	MFR CODE	FIG. M3.	ITEM NO.
CP09A1KB103K	81349	13	C1	RN65B9090F	81349	13	R1
CP09A1KE332K	81349	13	c4	RN80B1782F	81349	13	R6
CP09A1KE332K	81349	13	c5	RN80B2251F	81349	13	R10
CP09A1KF102K	81349	13	c2	RV6LAYS104A	a1349	10	R4
CP09A1KF102K	81349	13	C3	JN458	81149	13	CR1
JM9601-37PC	17419	19	J1	1N458	81349	13	CR2
DM9601-37SC	17419	10	52	1N458	81349	13	CR4
DM97C0004-37PC	17419		P2	1N458	81349	13	CR5
DM970037004C	17419		P1	1N473A	80131	13	CR3
MS25089-3F	96906	10	53	1N663	81349	13	CR6
MS25237-327	96906	10	DS1	1N663	81349	13	CR9
MS25237-327	96906		OS2	2N337	R1349	13	Q1
MS25237-327	96906	10	OS3	2N337	81349	13	Q2
MS25237-327	96906	10	OS4	2N337	81349	13	Q3
MS25237-327	96906	10	DS5	2N337	81349		
RC07GF103J	81349	13	R11	2N337	81349	13	Q4
RC07GF103J	81349	13	R13	217-29352-2	94990	13	R5
RC07GF104J	83349	13	R14	223-11616-109	94990	13	C6
RC07GF104J	81349	13	R21	232-36946	94990		
RC07GF123J	81349	13	R16	240-36912	94990	10	
RC07GF123J	81349	13	R19	240-36913	94990	10	S2
RC07GF153J	81349	13	R22	265-36930	94990		
RC07GF153J	81349	13	R23	265-36930	94990		
RC07GF182J	81349	13	R15	265-36930	94990		XDS1
RC07GF182J	81349	12	R23	265-36930	94990		XDS3
RC07GF182J	81349	13	R24	265-36930	94990		XDS4
RC07GF183J	81349	13	R17	265-36930	94990		XDS5
RC07GF183J	81349	13	R18	272-36489-1	94990		
RC07GF223J	81349	13	R25	272-36489-2	94390		
RC07GF473J	81349	13	R3	275-36931	94990		
RC07GF514J	81349	13	R2	280-33457-1	94090	13	K1
RC07GF681J	81349	13	R12	280-33457-1	94990	10	K2
RN65B1371F	81349	13	R9	280-33457-1	94990	10	K3
RN65B2611F	81349	13	R8	280-33457-1	94990	10	K4
RN65B3740F	81349	13	R7	280-334571	94990	10	K5

SECTION IV

TM11-6625-458-34P

REFERENCE NO.	MFR CODE	FIG. ND.	ITEM NO.	REFERENCE NO.	MFR CODE	FIG. NO.	ITEM ND.
3615-15061A02			94990				

By Order of the Secretary of the Army:

CREIGHTON W. ABRAMS
General, United States Army
Chief of Staff

Official:

VERNE L. BOWERS

Major General, United States Army
The Adjutant General

Distribution:

To be distributed in accordance with DA Form 12-36A (qty rqr block No. 993) direct and general support maintenance requirements for AN/GPM-46.

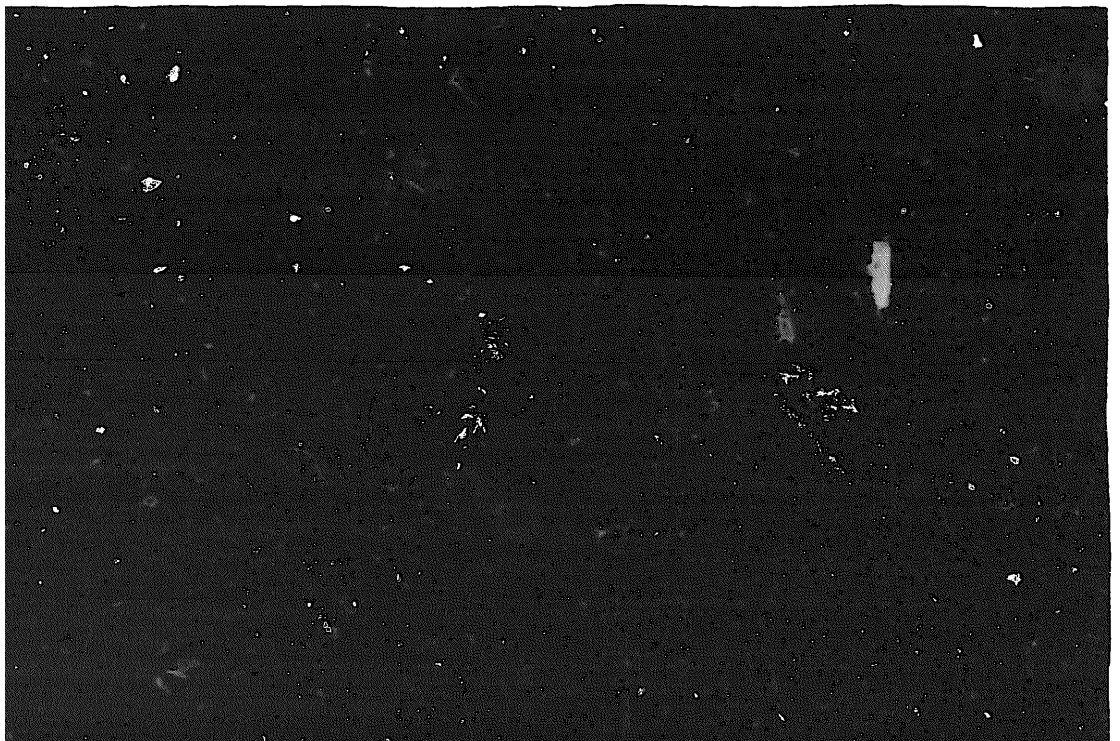
*U.S. GOVERNMENT PRINTING OFFICE: 1973-769620/1071

END

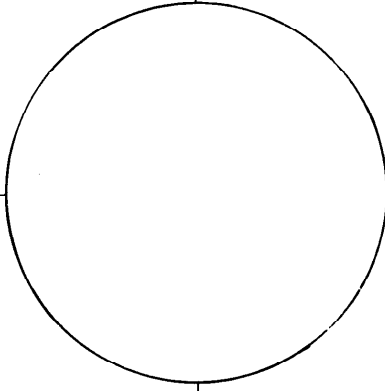
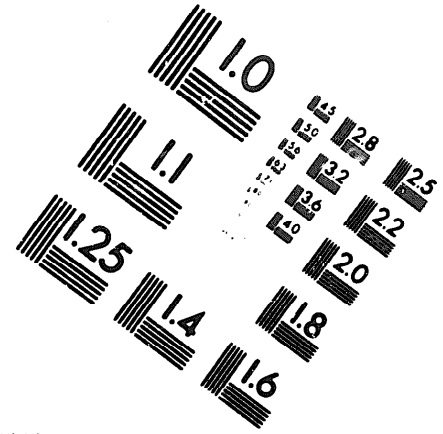
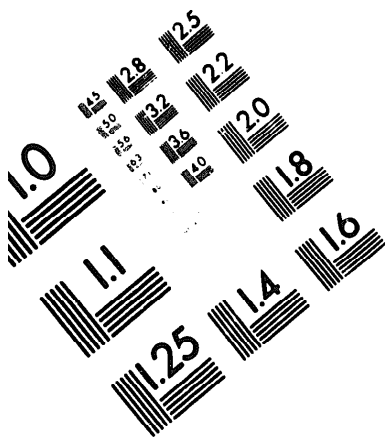
01-03-83

DATE





DEPARTMENT OF THE ARMY
MICROFORM
TEST TARGET



10 mm (e= 81 mm)

ABCDEFGHIJKLMNQRSTUWXYZ1234567890
abcdefghijklmnopqrstuvwxyz\$%&/'%# 1/2 1/4 3/4 ---+ x&@*

1.5 mm (e= 1.09 mm)

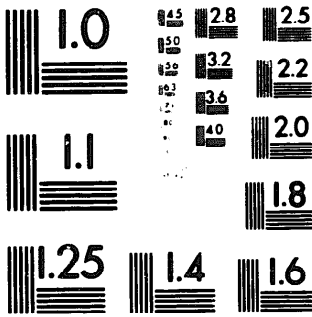
ABCDEFGHIJKLMNQRSTUWXYZ1234567890
abcdefghijklmnopqrstuvwxyz\$%&/'%# 1/2 1/4 3/4 ---+ x&@*

2.0 mm (e= 1.37 mm)

ABCDEFGHIJKLMNQRSTUWXYZ
abcdefghijklmnopqrstuvwxyz
1234567890\$%&/'%# 1/2 1/4 3/4 ---+ x&@*

2.5 mm (e= 1.77 mm)

ABCDEFGHIJKLMNQRSTUWXYZ
abcdefghijklmnopqrstuvwxyz
1234567890\$%&/'%# 1/2 1/4 3/4 ---+ x&@*



10 mm (e= 81 mm)

ABCDEFGHIJKLMNQRSTUWXYZ1234567890
abcdefghijklmnopqrstuvwxyz\$%&/'%# 1/2 1/4 3/4 ---+ x&@*

1.5 mm (e= 1.09 mm)

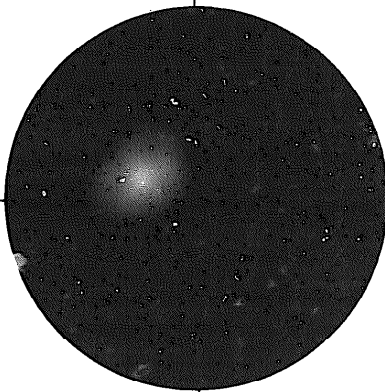
ABCDEFGHIJKLMNQRSTUWXYZ1234567890
abcdefghijklmnopqrstuvwxyz\$%&/'%# 1/2 1/4 3/4 ---+ x&@*

2.0 mm (e= 1.37 mm)

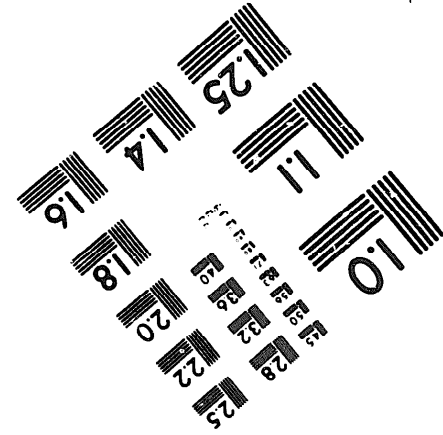
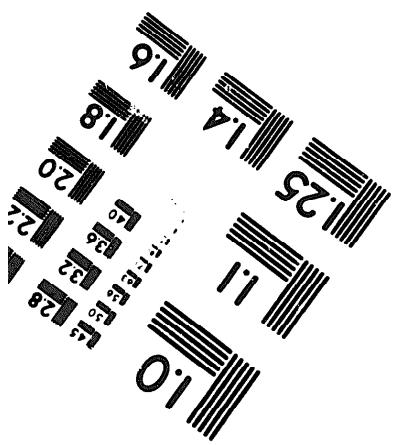
ABCDEFGHIJKLMNQRSTUWXYZ
abcdefghijklmnopqrstuvwxyz
1234567890\$%&/'%# 1/2 1/4 3/4 ---+ x&@*

2.5 mm (e= 1.77 mm)

ABCDEFGHIJKLMNQRSTUWXYZ
abcdefghijklmnopqrstuvwxyz
1234567890\$%&/'%# 1/2 1/4 3/4 ---+ x&@*



200 MM



250 MM